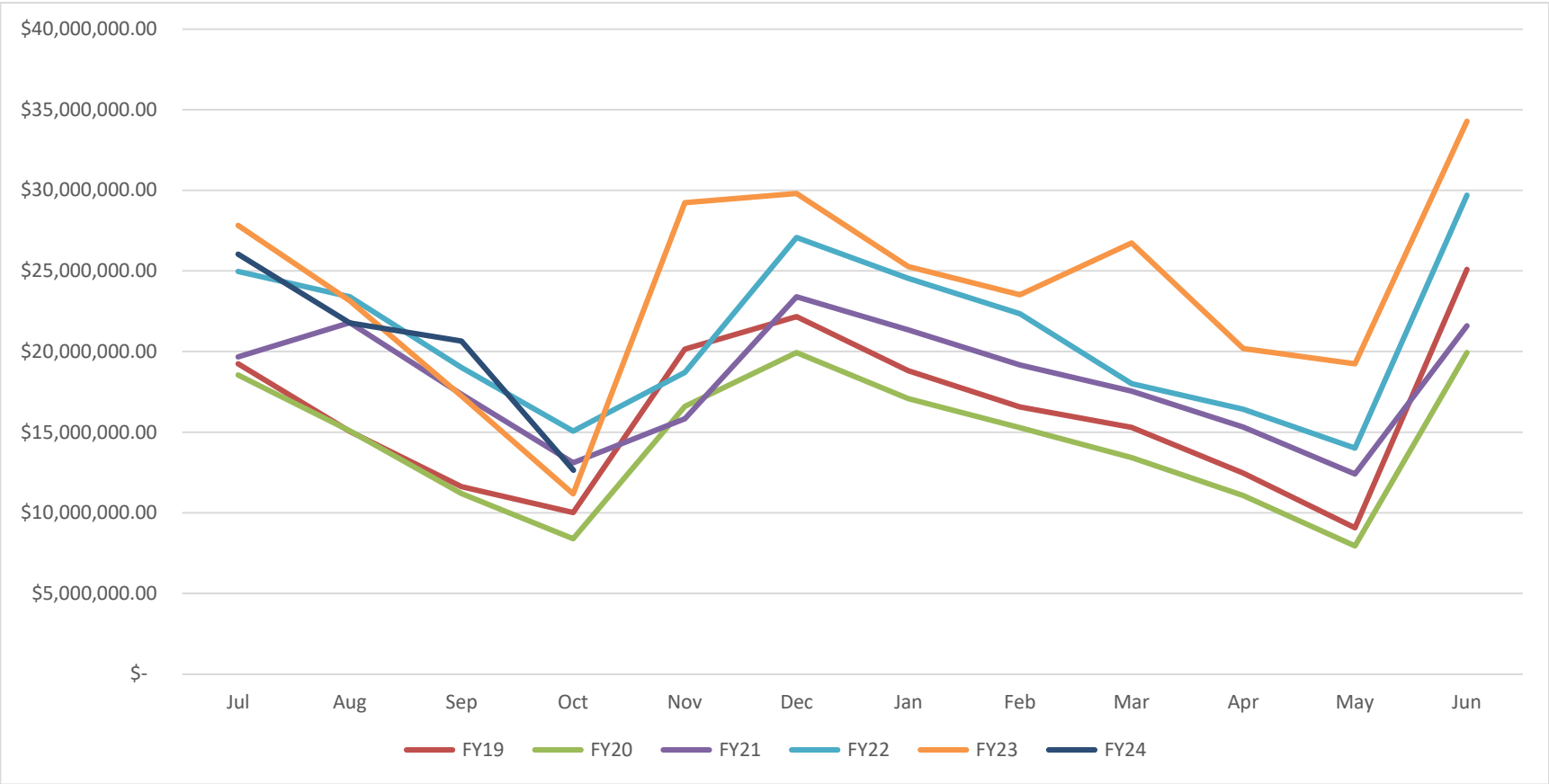


END OF MONTH RECONCILED ACCOUNT BALANCES

ACCOUNT BALANCES BY FUND	Prior Month Ending Balance	Summary of Account Activity	Current Month Ending Balance
<b>GENERAL FUND ACCOUNTS:</b>			
General Fund Checking Account - Truist	1,832,636.47	(1,465,110.03)	367,526.44
General Fund Checking Account - Chesapeake	18,935,584.00	(6,840,098.02)	12,095,485.98
General Fund Disbursement Account - Chesapeake	633,784.14	265,252.96	899,037.10
School Sales Tax Account - Chesapeake	10,656,146.03	540,119.88	11,196,265.91
Sheriff Asset Forfeiture (Commonwealth) - Chesapeake	28,794.02	121.88	28,915.90
Commonwealth Attorney Asset Forfeiture (Commonwealth) - Chesapeake	497.69	2.11	499.80
Sheriff Asset Forfeiture (Federal) - Chesapeake	3,209.14	13.58	3,222.72
Commonwealth Attorney Asset Forfeiture (Federal-Justice) - Chesapeake	505.21	2.14	507.35
Asset Forfeiture (Federal-Treasury) - Chesapeake	22,451.91	95.04	22,546.95
General Fund Investment Account - LGIP	209,159.14	977.92	210,137.06
Older Adult Facility Fund - LGIP	37,227.38	174.05	37,401.43
<b>General Fund Accounts Total</b>	<b>32,359,995.13</b>	<b>(7,498,448.49)</b>	<b>24,861,546.64</b>
<b>CAFETERIA FUND ACCOUNTS:</b>			
Cafeteria Checking Account - Chesapeake	698,801.75	21,284.53	720,086.28
Cafeteria Investment Account - LGIP	6,770.54	31.66	6,802.20
<b>Cafeteria Accounts Total</b>	<b>705,572.29</b>	<b>21,316.19</b>	<b>726,888.48</b>
<b>UTILITIES FUND ACCOUNTS:</b>			
Utilities Checking Account - Chesapeake	3,783,378.58	(166,114.39)	3,617,264.19
Utilities Investment Account - LGIP	211,345.34	988.11	212,333.45
<b>Utilities Accounts Total</b>	<b>3,994,723.92</b>	<b>(165,126.28)</b>	<b>3,829,597.64</b>
<b>OTHER ACCOUNTS:</b>			
Gloucester Sanitary District #1 Checking Account - Chesapeake	14,925.30	439.07	15,364.37
Gloucester Point Sanitary District Checking Account - Chesapeake	75,393.06	720.48	76,113.54
Gloucester County D.A.R.E Scholarship Fund Checking Account - Chesapeake	5,616.77	23.78	5,640.55
Social Services Special Welfare Checking Account - Chesapeake	16,172.99	(366.08)	15,806.91
Social Services/SSI Dedicated Funds Checking Account - Chesapeake	6.21	0.02	6.23
Middle Peninsula Regional Special Education Checking Account - Chesapeake	186,527.69	(15,747.19)	170,780.50
Middle Peninsula Regional Special Education Investment Account - LGIP	5,456.16	25.49	5,481.65

*Note: These amounts are a restatement of the amounts on the general ledger on the date this report is prepared. While the amounts have been reconciled, they are subject to change as the final reconciliations are done in preparation for the annual audit.*

AVAILABLE GENERAL FUND CASH - TRENDS



See next page for corresponding detail

COUNTY OF GLOUCESTER

October 31, 2023

GENERAL FUND CASH

AVAILABLE GENERAL FUND CASH:

	FY19	FY20	FY21	FY22	FY23	FY24
Jul	\$ 19,238,297.17	\$ 18,534,826.00	\$ 19,668,391.41	\$ 24,964,102.54	\$ 27,831,469.65	\$ 26,053,595.45
Aug	\$ 15,036,433.83	\$ 15,072,073.20	\$ 21,799,834.88	\$ 23,390,517.67	\$ 23,152,551.38	\$ 21,774,005.21
Sep	\$ 11,619,027.15	\$ 11,189,278.11	\$ 17,348,864.44	\$ 18,999,624.44	\$ 17,232,507.14	\$ 20,657,083.47
Oct	\$ 10,007,072.65	\$ 8,394,798.06	\$ 13,101,736.07	\$ 15,064,557.37	\$ 11,189,041.51	\$ 12,641,622.56
Nov	\$ 20,156,405.42	\$ 16,592,354.78	\$ 15,822,018.60	\$ 18,709,616.09	\$ 29,238,860.66	
Dec	\$ 22,166,095.14	\$ 19,948,429.69	\$ 23,404,513.04	\$ 27,071,650.36	\$ 29,799,827.08	
Jan	\$ 18,811,849.84	\$ 17,075,091.39	\$ 21,341,919.60	\$ 24,530,762.22	\$ 25,272,638.22	
Feb	\$ 16,561,366.00	\$ 15,269,760.09	\$ 19,174,540.95	\$ 22,338,871.58	\$ 23,524,389.73	
Mar	\$ 15,292,146.04	\$ 13,428,810.36	\$ 17,537,642.54	\$ 18,012,361.58	\$ 26,730,780.93	
Apr	\$ 12,449,065.20	\$ 11,061,770.16	\$ 15,309,158.40	\$ 16,410,691.54	\$ 20,193,509.36	
May	\$ 9,080,348.54	\$ 7,954,866.01	\$ 12,407,914.56	\$ 14,025,794.33	\$ 19,239,833.63	
Jun	\$ 25,105,436.15	\$ 19,937,079.61	\$ 21,590,147.06	\$ 29,710,133.72	\$ 34,298,455.67	

DETAIL BY MONTH:

	Jul-23	Aug-23	Sep-23	Oct-23
End of Month Reconciled Balance	\$ 37,298,089.78	\$ 33,239,410.90	\$ 32,359,995.13	\$ 24,861,546.64
Less Restricted Cash:				
Due to Commonwealth	\$ -	\$ 2,566.00	\$ -	\$ -
Funds on Deposit	\$ 789,031.41	\$ 779,891.41	\$ 759,946.41	\$ 746,406.41
Refunds	\$ 250.00	\$ 564.96	\$ 1,650.04	\$ 509.89
Schools Self-Insurance	\$ 721,796.38	\$ 421,352.74	\$ 136,162.46	\$ 140,375.97
Schools Sales Tax Fund	\$ 9,541,139.94	\$ 10,096,894.71	\$ 10,656,146.03	\$ 11,196,265.91
Employee Flexible Benefits Funds	\$ 44,543.76	\$ 50,027.07	\$ 56,321.37	\$ 43,271.75
Asset Forfeiture Funds	\$ 76,716.14	\$ 77,048.73	\$ 55,457.97	\$ 55,692.72
Older Adult Facility Fund	\$ 71,016.70	\$ 37,060.07	\$ 37,227.38	\$ 37,401.43
Total Restricted Cash	\$ 11,244,494.33	\$ 11,465,405.69	\$ 11,702,911.66	\$ 12,219,924.08
<b>AVAILABLE GENERAL FUND CASH</b>	\$ 26,053,595.45	\$ 21,774,005.21	\$ 20,657,083.47	\$ 12,641,622.56