


# FY27 CIP SUBMISSION

<b>REVISED</b>		<u>ADA Improvements - Parks</u>				<u>Date:</u> <b>10/6/2025</b>		
Describe revision, if applicable		Adjusted project years and added in additional Gloucester Point Beach work.				Year of First Submittal:	<b>2019</b>	
<b>Project Overview:</b>		Ensuring county parks meet federal accessibility requirements through accessible parking and sidewalks.						
Requesting Department	Park Operations	Est. Useful Life	20 Years					
Location (address)	Various Parks	Start Year	2027					
Magisterial District	Multiple	Est. Completion Year	2031					
Annual Recurring Cost	Less than +\$1,000	Category	Construction of New Facilities					
Number of Residents Served	ALL	Primary Board Priority	Natural and Recreational Resources					
Expenditure Description		Total Project Request	5-Year CIP					
			Budget Year	Planning Years				Beyond 5 Years
			FY2027	FY2028	FY2029	FY2030	FY2031	FYI only
Land Acquisition	\$ -							
A&E	70,000	20,000	20,000	10,000	10,000	10,000		
Construction	800,295	130,000	130,000	218,118	104,059	218,118		
Equipment	-							
Other	-							
<b>Total Proposed Capital Costs</b>	<b>\$ 870,295</b>	<b>\$ 150,000</b>	<b>\$ 150,000</b>	<b>\$ 228,118</b>	<b>\$ 114,059</b>	<b>\$ 228,118</b>	<b>\$ -</b>	
Source of Funding		Total Funding	FY 2027	FY2028	FY2029	FY2030	FY2031	Beyond 5 Years
Grant	\$ -							
Donations	-							
Fund Balance-Committed	-							
County Funds	870,295	150,000	150,000	228,118	114,059	228,118		
<b>Total Capital Funding</b>	<b>\$ 870,295</b>	<b>\$ 150,000</b>	<b>\$ 150,000</b>	<b>\$ 228,118</b>	<b>\$ 114,059</b>	<b>\$ 228,118</b>	<b>\$ -</b>	
		Describe Funding Sources (If Not County Funds)	No identified funding sources besides County funds.					
		Describe Annual Recurring Costs	Basic sidewalk maintenance covered by Park Operations staff (power washing, cleaning, blowing debris, etc.)					

Project Element	Total Project Request	5-Year CIP					
		Budget Year	Planning Years				Beyond 5 Years
		FY2027	FY2028	FY2029	FY2030	FY2031	FYI only
Gloucester Point Beach Phase I	\$ 150,000	\$ 150,000					
Gloucester Point Beach Phase II	150,000		150,000				
Woodville Fields- 1-7 sidewalks	228,118			228,118			
Abingdon Phase II sidewalks	114,059				114,059		
Ark Phase II- Back field parking spots & sidewalks	114,059					114,059	
Brown & Tyndall's Park- Parking spots & sidewalks	114,059					114,059	
	-						
	-						
	-						
	-						
	-						
	-						
<b>Total Proposed Capital Costs</b>	<b>\$ 870,295</b>	<b>\$ 150,000</b>	<b>\$ 150,000</b>	<b>\$ 228,118</b>	<b>\$ 114,059</b>	<b>\$ 228,118</b>	<b>\$ -</b>

<b>Describe project elements (if necessary)</b>	The project includes accessible parking spots and sidewalks to site amenities such as athletic fields and picnic areas. These are federally mandated items. These costs are updated as of October 2023 per Engineering.
<b><u>Space below is available for any additional details not provided above:</u></b>	
<b><u>Project Alternative:</u></b>	
Projects can be delayed or partial sidewalks can be funded with the intention to finish them down the line.	

2/2024



Woodville Park

Woodville Park Playground

Field 3

Field 4

Field 7

Field 6

Field 5



Google Earth

Imagery Date: 5/1/2021 37°19'21.70" N 76°29'57.30" W elev 10 ft eye alt 1270 ft

1985

WOODVILLE PARK PARKING LOT ① @  
SOCCER FIELD:

- PARKING AREA STABILIZATION/MARKING OPTIONS	
OPTION A: PAVE ENTIRE PARKING AREA	2,050 SY
OPTION B: PAVE 50 PARKING STALLS	900 SY ;
LEAVE ACCESS AISLES GRAVEL	1,150 SY
OPTION C: PAVE ACCESS AISLES	1,150 SY;
LEAVE PARKING AREA GRAVEL	900 SY
OPTION D: LEAVE PARKING AREA GRAVEL W/ PERIODIC GRADING & ADD 50 WHEEL STOPS	2,050 SY
- PARKING TABULATION	
PROPOSED STANDARD 9'x18' SPACES	48
PROPOSED VAN ACCESSIBLE 11'x18' HANDICAP SPACES	1
PROPOSED STANDARD 9'x18' HANDICAP SPACE	1
TOTAL PARKING SPACES	50 SPACES

WOODVILLE PARK PARKING LOT ② @  
GARDEN:

- PARKING AREA STABILIZATION/MARKING OPTIONS	
OPTION A: PAVE ENTIRE PARKING AREA	3,050 SY
OPTION B: PAVE 68 PARKING STALLS	1,250 SY ;
LEAVE ACCESS AISLES GRAVEL	1,800 SY
OPTION C: PAVE ACCESS AISLES	1,800 SY;
LEAVE PARKING AREA GRAVEL	1,250 SY
OPTION D: LEAVE PARKING AREA GRAVEL W/ PERIODIC GRADING & ADD 68 WHEEL STOPS	3,050 SY
- PARKING TABULATION	
PROPOSED STANDARD 9'x18' SPACES	65
PROPOSED VAN ACCESSIBLE 11'x18' HANDICAP SPACES	1
PROPOSED STANDARD 9'x18' HANDICAP SPACE	2
TOTAL PARKING SPACES	68 SPACES

ADA AREA ① : PARKING LOT 1 (SOCCER FIELDS, CONCESSION &  
SAND SOCCER FIELDS)

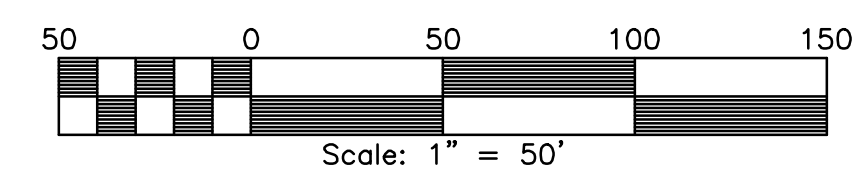
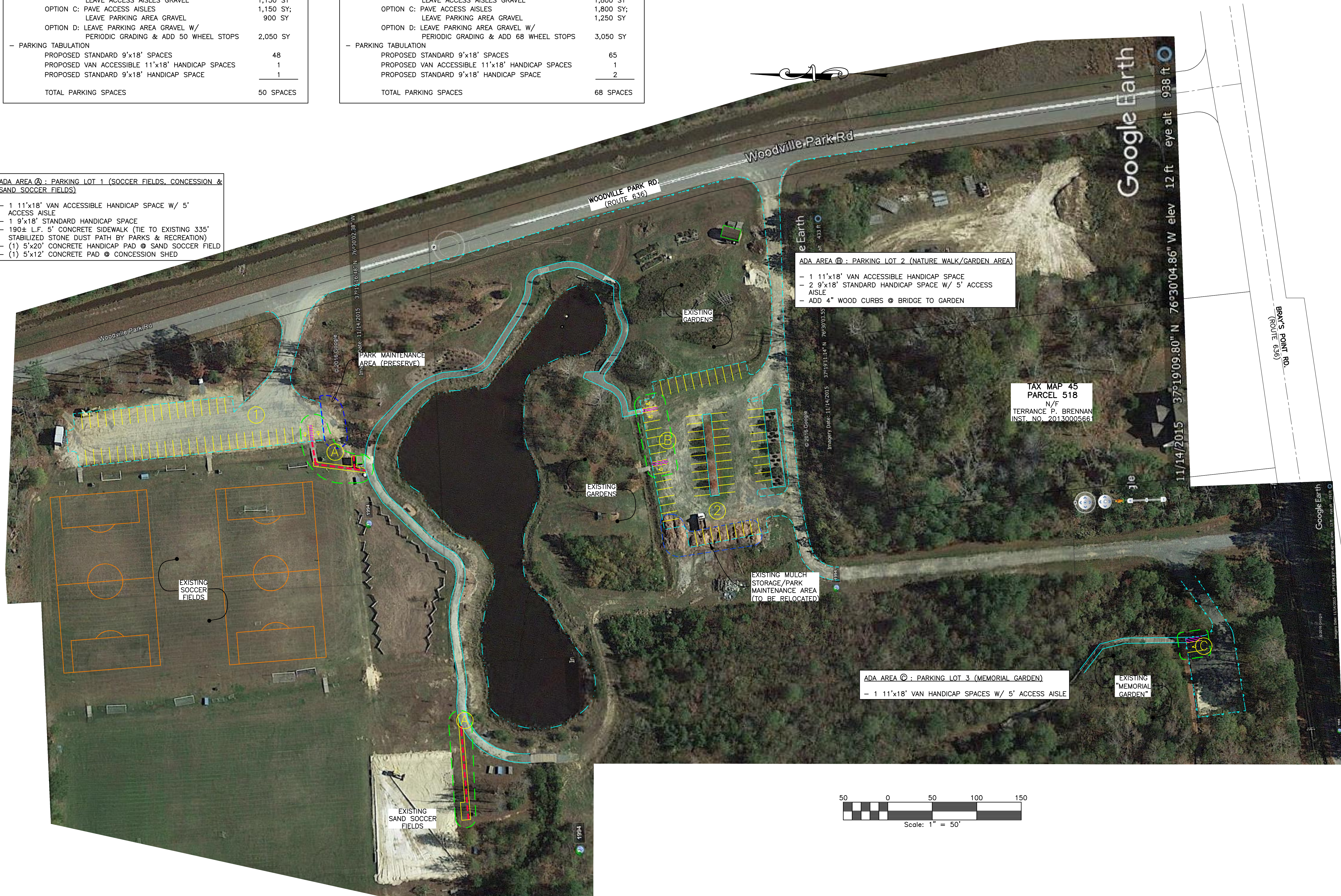
- 1 11'x18' VAN ACCESSIBLE HANDICAP SPACE W/ 5' ACCESS AISLE
- 1 9'x18' STANDARD HANDICAP SPACE
- 190± L.F. 5' CONCRETE SIDEWALK (TIE TO EXISTING 335' STABILIZED STONE DUST PATH BY PARKS & RECREATION)
- (1) 5'x20' CONCRETE HANDICAP PAD @ SAND SOCCER FIELD
- (1) 5'x12' CONCRETE PAD @ CONCESSION SHED

ADA AREA ② : PARKING LOT 2 (NATURE WALK/GARDEN AREA)

- 1 11'x18' VAN ACCESSIBLE HANDICAP SPACE
- 2 9'x18' STANDARD HANDICAP SPACE W/ 5' ACCESS AISLE
- ADD 4" WOOD CURBS @ BRIDGE TO GARDEN

ADA AREA ③ : PARKING LOT 3 (MEMORIAL GARDEN)

- 1 11'x18' VAN HANDICAP SPACES W/ 5' ACCESS AISLE



JOB NO. 16287-01A

THIS DRAWING IS THE PROPERTY OF BAY DESIGN GROUP AND IS NOT TO BE REPRODUCED OR USED FOR ANY PROJECT IN WHOLE OR IN PART WITHOUT EXPRESS WRITTEN PERMISSION.

PROJECT MANAGER:

WBB

DESIGNED:

WAS

CAD:

WAS

CHECKED:

WBB

FILED:

DATE: MARCH 31, 2017

REVISED: APRIL 13, 2017

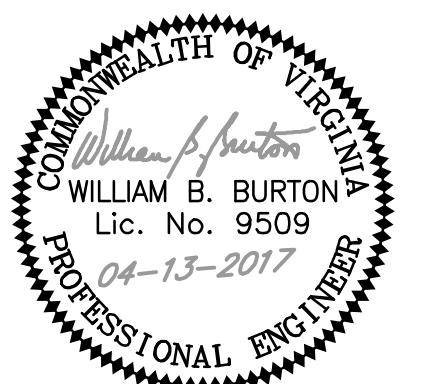
REVISED:



Engineering Surveying & Land Planning

www.baydesigngroup.com

14833 GEO. WASH. MEM. HWY.  
GLENN, VA 23149  
(804) 693-2993



PROJECT:

GLOUCESTER  
COUNTY PARKS  
ADA  
IMPROVEMENTS

YORK DISTRICT  
GLOUCESTER COUNTY, VIRGINIA

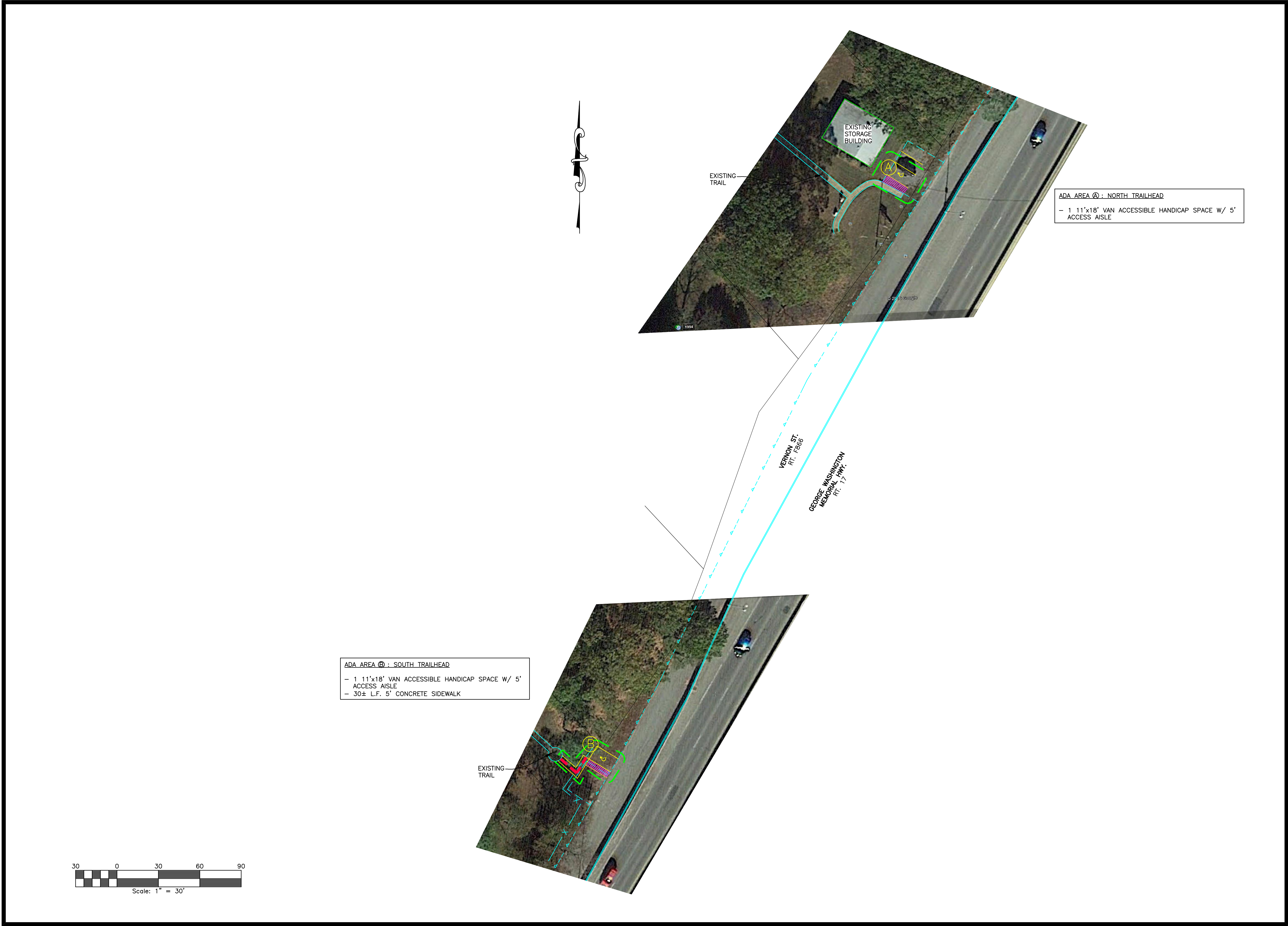
SHEET:

WOODVILLE PARK  
PRELIMINARY  
STUDY

SHEET NO:

C1

JOB NO. 16287-01A



JOB NO. 16287-01A

THIS DRAWING IS THE PROPERTY OF BAY DESIGN GROUP AND IS NOT TO BE REPRODUCED OR USED FOR ANY PROJECT IN WHOLE OR IN PART WITHOUT EXPRESS WRITTEN PERMISSION.

PROJECT MANAGER: WBB

DESIGNED: WAS

CAD: WAS

CHECKED: WBB

FILED:

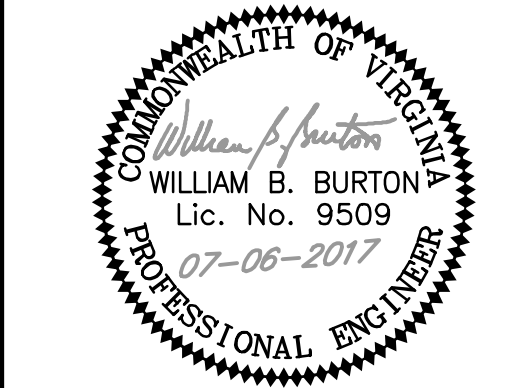
DATE: APRIL 17, 2017

REVISED: JUNE 12, 2017

REVISED: JULY 6, 2017



14833 GEO. WASH. MEM. HWY.  
GLENN, VA 23149  
(804) 693-2993



PROJECT:

# GLOUCESTER COUNTY PARKS ADA IMPROVEMENTS

GLOUCESTER POINT DISTRICT  
GLOUCESTER COUNTY, VIRGINIA

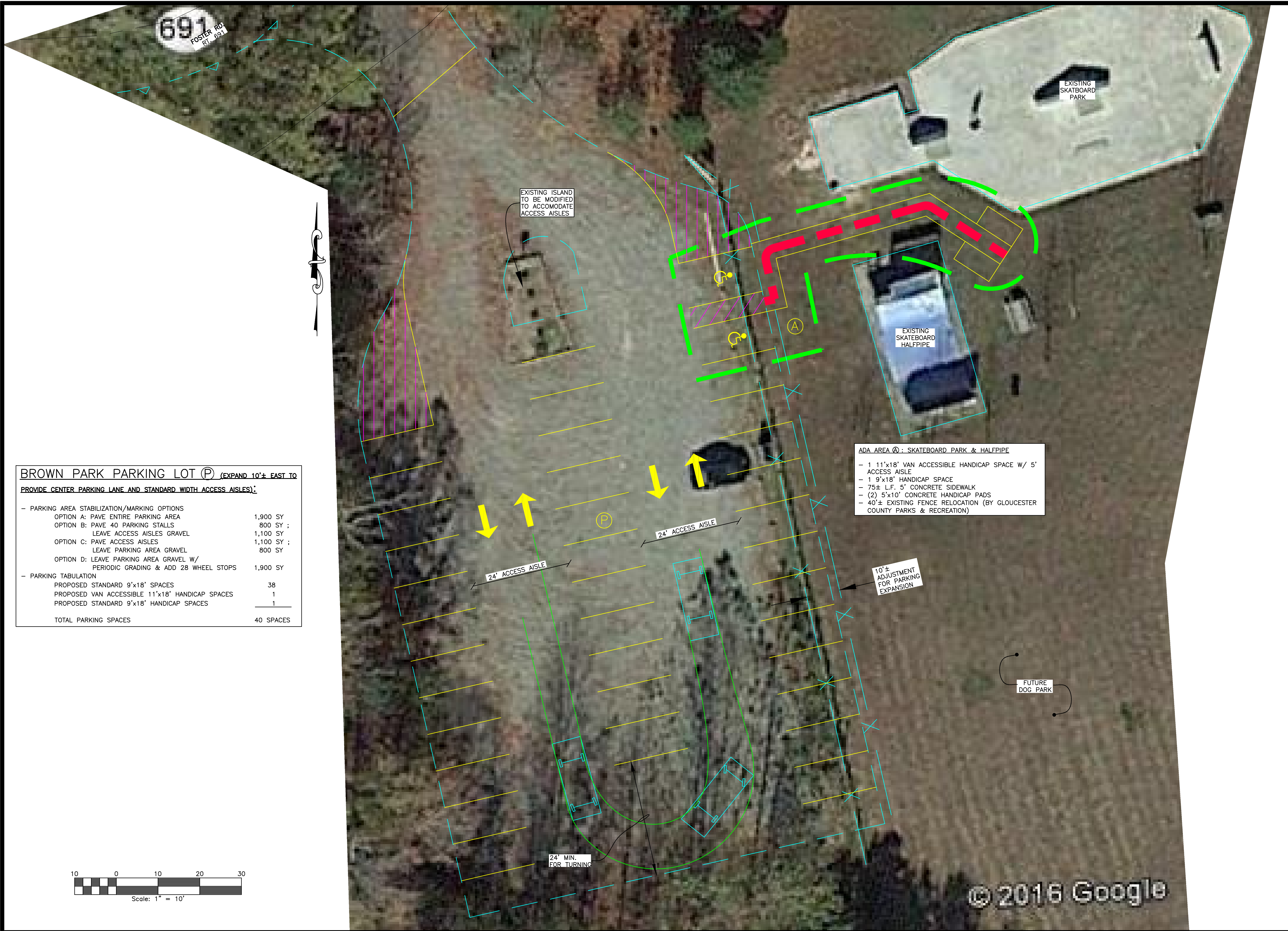
SHEET:

## TYNDALL PARK PRELIMINARY STUDY

SHEET NO:

C1

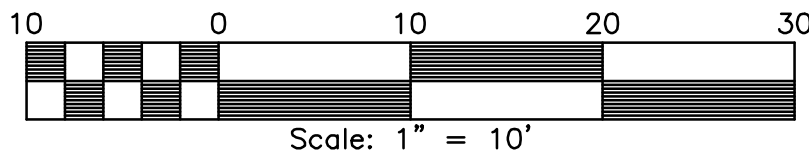
JOB NO. 16287-01A



**BROWN PARK PARKING LOT (P) (EXPAND 10'± EAST TO PROVIDE CENTER PARKING LANE AND STANDARD WIDTH ACCESS AISLES)**

- PARKING AREA STABILIZATION/MARKING OPTIONS	
OPTION A: PAVE ENTIRE PARKING AREA	1,900 SY
OPTION B: PAVE 40 PARKING STALLS	800 SY ;
LEAVE ACCESS AISLES GRAVEL	1,100 SY
OPTION C: PAVE ACCESS AISLES	1,100 SY ;
LEAVE PARKING AREA GRAVEL	800 SY
OPTION D: LEAVE PARKING AREA GRAVEL W/ PERIODIC GRADING & ADD 28 WHEEL STOPS	1,900 SY
- PARKING TABULATION	
PROPOSED STANDARD 9'x18' SPACES	38
PROPOSED VAN ACCESSIBLE 11'x18' HANDICAP SPACES	1
PROPOSED STANDARD 9'x18' HANDICAP SPACES	1
TOTAL PARKING SPACES	40 SPACES

- ADA AREA @: SKATEBOARD PARK & HALFPIPE**
- 1 11'x18' VAN ACCESSIBLE HANDICAP SPACE W/ 5' ACCESS AISLE
  - 1 9'x18' HANDICAP SPACE
  - 75± L.F. 5' CONCRETE SIDEWALK
  - (2) 5'x10' CONCRETE HANDICAP PADS
  - 40'± EXISTING FENCE RELOCATION (BY GLOUCESTER COUNTY PARKS & RECREATION)



JOB NO. 16287-01A

THIS DRAWING IS THE PROPERTY OF BAY DESIGN GROUP AND IS NOT TO BE REPRODUCED OR USED FOR ANY PROJECT IN WHOLE OR IN PART WITHOUT EXPRESS WRITTEN PERMISSION.

PROJECT MANAGER: WBB

DESIGNED: WAS

CAD: WAS

CHECKED: WBB

FILED:

DATE: APRIL 17, 2017

REVISED: JUNE 12, 2017

REVISED: JULY 6, 2017



14833 GEO. WASH. MEM. HWY.  
GLENNS, VA 23149  
(804) 693-2993



PROJECT:

**GLOUCESTER COUNTY PARKS  
ADA  
IMPROVEMENTS**

WARE DISTRICT  
GLOUCESTER COUNTY, VIRGINIA

SHEET:

**BROWN PARK  
PRELIMINARY  
STUDY**

SHEET NO:

C1

JOB NO. 16287-01A